

# PEARLFECTION

SOUTH SEA PEARL CONSORTIUM NEWSLETTER

• NO.1 • 2005



## WHITE MAGIC

Imagine the sensuous beauty of the world's most beautiful and rarest pearls, white South Sea pearls, transformed into stunning jewellery pieces by some of today's premier jewellery designers. The South Sea Pearl Consortium has made this dream a reality due to the generosity of the Paspaley Pearling Company and 17 international jewellery designers especially selected to represent the best the world has to offer.

The year 2005 is a special year for white South Sea pearls; it marks the 50<sup>th</sup> anniversary of the first South Sea pearl farm that was established at Kuri Bay in one of the remotest parts of the Kimberley coast in Northern Australia. Following the collapse of the natural South Sea pearl industry soon after World War II, Kuri Bay was established by the last of the Australian pearl farmers with a vision to culture white South Sea pearls-the prize of all the world's pearls.

50 years later, the cultured white South Sea pearl has become a reality. And this collaboration between man and nature is being celebrated by bringing together these magnificent pearls and some of the world's best jewellery designers. The Paspaley Pearling Company has made available the finest gem quality white cultured South Sea pearls from its Australian pearl farms, including pearls from its famous Kuri Bay pearl farm, to these talented designers, who have together created a unique collection of jewellery entitled "White Magic".

The result of this collaboration between the world's greatest pearl source and top designers is a truly magical collection which showcases the jewellery style and talent of each designer as their imagination is captivated by the stunning beauty of these gem quality pearls.

And just as each South Sea pearl is unique, this collection is also unique, as each of these pieces is part of a collection of pearl jewellery never before assembled. The exhibition is travelling the world and will be seen in many cities including New York, London, Milan, Moscow, Dubai, Hong Kong, Shanghai, Nagoya (Japan) and Sydney. "White Magic" will be displayed in locations as special as the jewels themselves, such as the Royal Opera House in London and the Cooper Hewitt Museum in New York.

The result is a truly magical exhibition to celebrate the beauty of a magical gem, the white South Sea cultured pearl.

## MESSAGE FROM THE CHAIRMAN

Love and appreciation of the world's finest pearls is the "Motivation" behind all SSPC activities.

Beautiful jewellery enables us to appreciate these pearls in society as part of our daily culture. Jewellery brings us pleasure and adds beauty to our lives. And the unsung heroes that bring us these pleasures are often the jewellery designers.

The design and manufacture of jewellery is a highly skilled art form that has been developed over thousands of years. Additionally, the creation of fine jewellery is one of the most difficult tasks of all human art forms. Although we use jewellery daily, the jewellery designer is probably the least recognized artist in the luxury goods market in today's world.

Both the SSPC White Magic exhibition and the SSPC design competition featured in this newsletter were initiated to publicise the magic of these skilled artisans, and to encourage them to focus their special kind of genius to create designs which specifically celebrate the beauty of the magnificent South Sea cultured pearl.

Nicholas Paspaley AC

## INSIDE

### WHITE MAGIC DESIGN COMPETITION

# PEARLFECTION

SOUTH SEA PEARL CONSORTIUM NEWSLETTER • NO.1 • 2005

TIFFANY & CO.



KAORU KAY AKIHARA



COLEMAN DOUGLAS PEARLS



JÜRGEN KAMMLER



# WHITE MAGIC

GISÈLE MOORE



HENRY DUNAY



CHRISTIAN TSE



CASA VHERNIER

PHOTOGRAPHY BY DOUGLAS DUBLER

DAVID YURMAN



LORENZ BÄUMER



LILY LAM



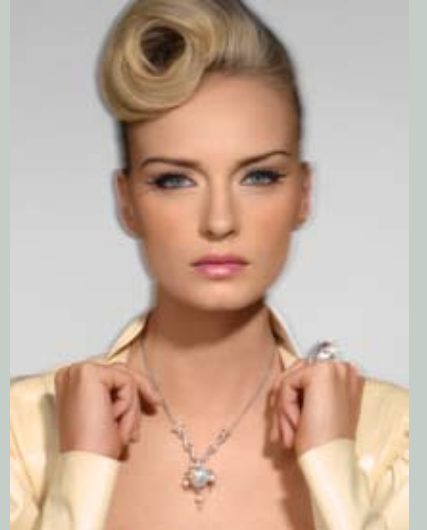
FAI CO



ELLAGEM



ORLANDO ORLANDINI



STAUERINO FRATELLI



NANIS



STEPHEN WEBSTER

## THE FIFTH INTERNATIONAL SOUTH SEA PEARL JEWELLERY DESIGN COMPETITION

The South Sea Pearl Jewellery Design Competition, organized by the South Sea Pearl Consortium and sponsored by the Hong Kong Trade Development Council, was held for the fifth year in 2005.

The aim of the competition is not only to highlight the beauty and uniqueness of the South Sea cultured pearl, but also to promote and disseminate design talent from all over the world. To achieve this, all entries must include the South Sea pearl as the major design element in one of the following seven categories. Bracelet, Brooch, Earrings, Necklace, Ring, Pendant and Other.

Furthermore, this year, one more category was

added to the competition – The Student Group. Winners of this group were granted a scholarship for jewellery design courses.

The growing success and reputation of the competition resulted in over 700 entries this year from countries that span the entire globe: from Australia, China, Hong Kong and Taiwan, to Korea and Japan, Malaysia, India, Thailand and The Philippines, to Italy, Switzerland, Turkey and the United States.

All winning designs were exhibited at the Hong Kong International Jewellery Show organized by the HKTDC, held between March 1- 4, 2005, and will also be exhibited in various cities in China during the year.

# DESIGN COMPETITION GOLD AWARD WINNERS



### BRACELET

Title :  
Dream  
Designer :  
Ko Wing Yu  
Country/Area:  
Hong Kong, China  
Manufacturer:  
Hang Fung Jewellery Co., Ltd.

### OTHER

Title :  
Confluence  
Designer :  
Tam Yan Yan  
Country/Area:  
China  
Manufacturer:  
Chow Tai Fook Jewellery Co., Ltd.



### BROOCH

Title :  
Vincent Van Gogh  
Designer :  
Lee Jeong Yeon  
Country/Area:  
Korea  
Manufacturer:  
Kong Min Ra

### PENDANT

Title :  
Passage of Life  
Designer :  
Wu Chui Luen  
Country/Area:  
Hong Kong, China  
Manufacturer:  
C.S.S. Jewellery Co., Ltd.



### EARRINGS

Title :  
Treasure in the Universe  
Designer :  
Lily Chui Lin Wong  
Country/Area:  
Hong Kong, China  
Manufacturer:  
Chow Tai Fook Jewellery Co., Ltd .

### RING

Title :  
A Couple in Love  
Designer :  
Stephanie Baik  
Country/Area:  
Korea  
Manufacturer:  
Stephanie Ltd.



### NECKLACE

Title :  
Dew  
Designer :  
Zheng Jing / Li Jun  
Country/Area:  
China  
Manufacturer:  
Jewellery Li Su Pin Nanjing Co.. Ltd .

### STUDENT

Title :  
Blessing  
Designer :  
Vivian Wing Yan Lee  
Country/Area:  
Hong Kong, China  
Manufacturer:  
Ng Fo Kan



For further information on the SSPC or to receive regular copies of the SSPC newsletter please complete and return this form.

Or alternatively, e-mail all details to: [sspc@sspc.net](mailto:sspc@sspc.net)

NAME .....

COMPANY .....

ADDRESS .....

.....

EMAIL .....

TELEPHONE.....

FAX .....

South Sea Pearl Consortium  
Rue du Vieux-College, 8,  
1204 Geneva, Switzerland  
Tel: + 41 22 311 0571  
Fax: + 41 22 311 0572  
Email: [sspc@sspc.net](mailto:sspc@sspc.net)  
Website: [www.sspc.net](http://www.sspc.net)



- Please add my details to your mailing list for the SSPC newsletter.
- Please send examples of the educational materials available from the SSPC.